

**Company Name:** Spike Power Sports  
**Vehicle Name:** Polaris General 2P  
**Product Description:** Soft Upper Doors  
**Part Number:** 58-1600  
**Revision:** R06 02/15/2022



655 Elm Ridge Ave, Canal Fulton OH, 44614  
 Phone: 866-576-5115 - SpikePowersports.com

**Contents:**

Qty	Description	Part Number
1	Left Hand Door	PATTERN-PAA334-LHS
1	Right Hand Door	PATTERN-PAA334-RHS
1	Front Receiving Bracket- Left Side	P45-1351
1	Front Receiving Bracket- Right Side	P45-1352
1	Rear Receiving bracket- Left Side	P45-1353
1	Rear Receiving bracket- Right Side	P45-1354
1	Front Plastic Triangle- Left Side	P46-1230
1	Front Plastic Triangle- Right Side	P46-1231
6	M8 Nylon Insert Lock Nut	P47-1223
6	M8x20mm Button or Pan Head Bolt	P47-1244
6	M8 Black Washer (16mm OD)	P47-1293
2	Thumb Screw Black Head Knurled	P47-1033
1	M6x40mm Hex Cap Screw	P47-1270
1	M8 Serrated Flange Nut	P47-1241
2	M6 Jack Nut	P47-1355
2	M6x40mm Socket Head Cap Bolt	P47-1346
2	M6 Fender Washer	P47-1231
2	M6x35mm Screw Button Head Socket	P47-1180
2	Nylon Spacer .25" (ID:0.27 in)	P46-1234
6	M8 Fender Washer Black	P47-1251
4	Snap in Plug Plastic for .78" D hole	P46-1237
1	Rubber Handle Black	P46-1027

**Tools Required:**

- Eye Protection (goggles or safety glasses)
- Gloves
- 10mm, 13mm wrench
- 13mm socket
- T25, T30 Torx driver
- Ratchet and extensions
- Standard slotted screw driver
- Hand drill with drill bit set including sizes from Ø.125 through Ø.875
- Awl
- Dremel with sanding and sanding bit

## Accessories Required:

Be sure any accessory used will fit with the soft upper doors before installing. Not all accessories will be compatible.

Quantity	Description
1	Windshield
1	Hard Roof
1	Rear Panel

**Approximate Assembly Time:** 1 hour

## Safety Information:

- You must wear eye protection and appropriate gloves when installing this kit.
- The engine must be OFF when performing any operation on the vehicle.
- Always be aware of parts that can move, such as wheels, transmission components, etc.
- Some components may be HOT. Always wait for the engine to cool down before performing work. To reduce the risk of severe injuries or death, read the safety labels and follow these rules.
- Door is not intended to retain and/or protect occupants.
- Subtract the weight of the accessory from the weight limit of the vehicle.
  
- **Always:**
  - o Fasten your seat belt
  - o Fasten lateral net.
  - o Keep your entire body inside the cockpit.
  - o Latch the door before riding.
  - o Transport this vehicle facing forward.
  - o Remove nets when using full doors only if required due to installation of the full doors.
  - o Do not rest elbow on door while riding.
  - o If nets are removed, reinstall nets if doors are removed.
  - o Never operate UTV without either door or nets in place.
  - o Inspect for safety problems, loose hardware, and loose buckles and straps before use.

## Use and Care Information:

- To clean: sponge with mild soap and cold water, rinse with a hose and allow it to drip-dry.
- Do not machine wash or dry.
- Use mild detergent to remove stubborn stains.
- When not in use, the window roll-up strap can be snapped to itself or otherwise stowed.
- The zipper should be cleaned using a toothbrush with soap and water and rinsed as needed. Once the zipper is cleaned, the teeth should be lubricated using beeswax or zipper specific lubricant.

**Important Window Information:**

- Spike has placed a few stitches at the lower rear of the windows on your General upper doors. The reason for this is to prevent a fully unzipped window from getting caught in the door latch. The stitches can carefully be removed so the window will lay completely down, but there will be a risk of damage if the door is closed, and the window is all the way down. Cutting the stitches will void the warranty.

**Important:**

- This door kit is exclusively designed for use on Polaris General 2 passenger models.
- Before beginning, read the installation instructions carefully and completely and verify that all components are included in this kit.
- Installation is easiest if the vehicle is clean and free of debris.
- Installation preparation, including cleaning and installing adhesive backed fasteners, must be done indoors at room temperature. All adhesives must be given 24 hours to dry before vehicle use.
- The instructions are written, and the photos show installation to the left-hand side of the vehicle. All steps must be performed on both sides of the vehicle.
- The illustrations/photos in this document show typical construction of the different assemblies and may not reproduce the full detail or exact shape of the parts; however, they represent parts that have the same or similar functions.

**Installation Instructions:**

<p>1) Setup the Vehicle</p> <p>Place the vehicle in "PARK". Turn the key to the "OFF" position and remove it from the vehicle.</p>	
--	--

2) Remove the door hinge access plates using a standard slotted screw driver.



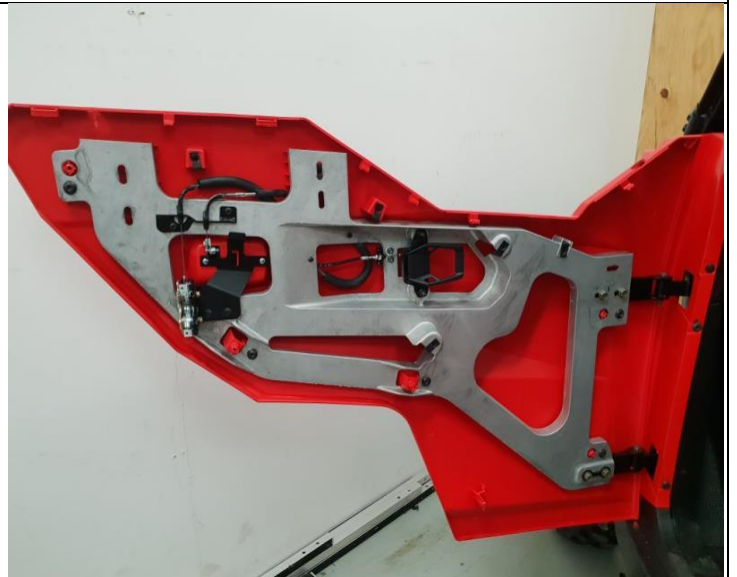
3) Remove the screws as shown. Make a note of the correct location of each screw to ensure they are reinstalled correctly.



4) Remove the inside door handle cover.



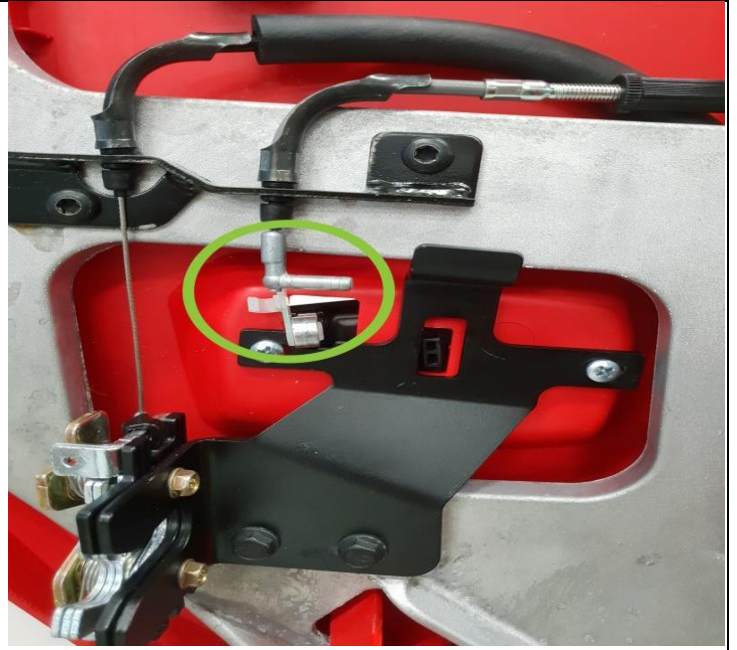
5) Remove the complete inner door panel.



6) Remove the outer door handle-cable by pushing the plastic cable lock towards the outside of the door.



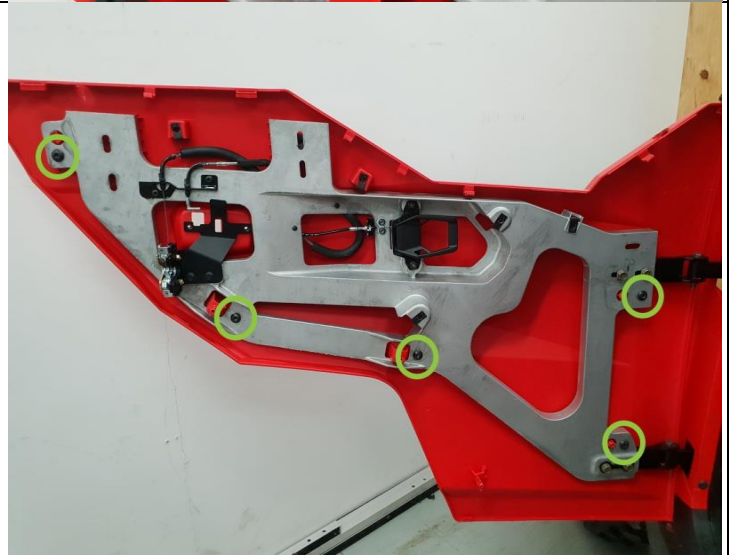
7) Slide the cable out of the holder.



8) Remove the outer handle screws and remove the outer handle.



9) Remove the outer panel screws as shown.

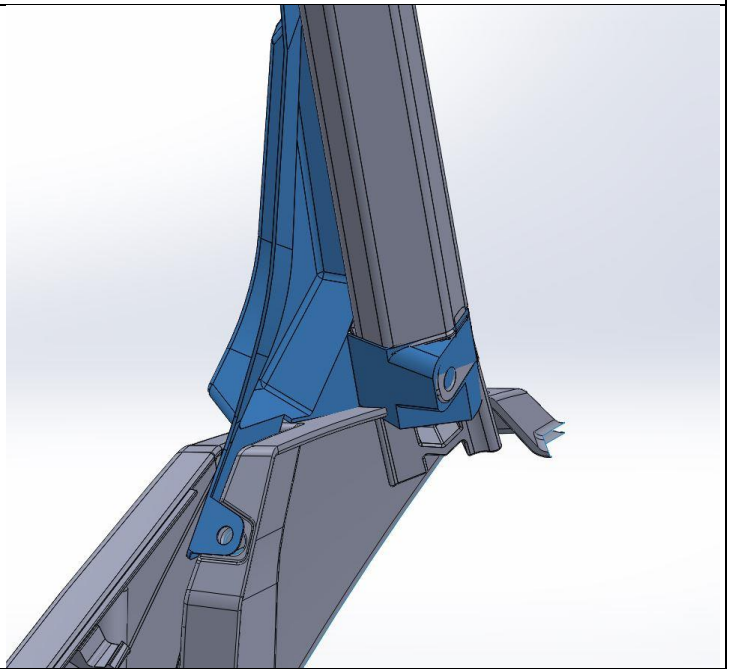


10) Remove the outer door panel.



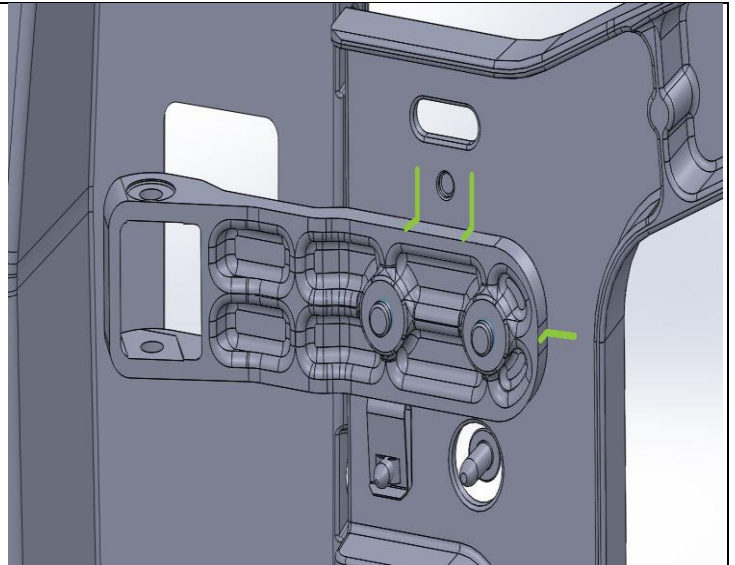
11) Install the front plastic triangle to the lower A-pillar.

- Remove the push dart from the vehicle plastic.
- Position the front plastic triangle in place with the front tab wrapping around the A-pillar.
- Secure the rear tab by reinstalling the push dart through the plastic triangle.
- Remove the backing from the adhesive on the upper portion of the triangle and adhere it to the OPS.



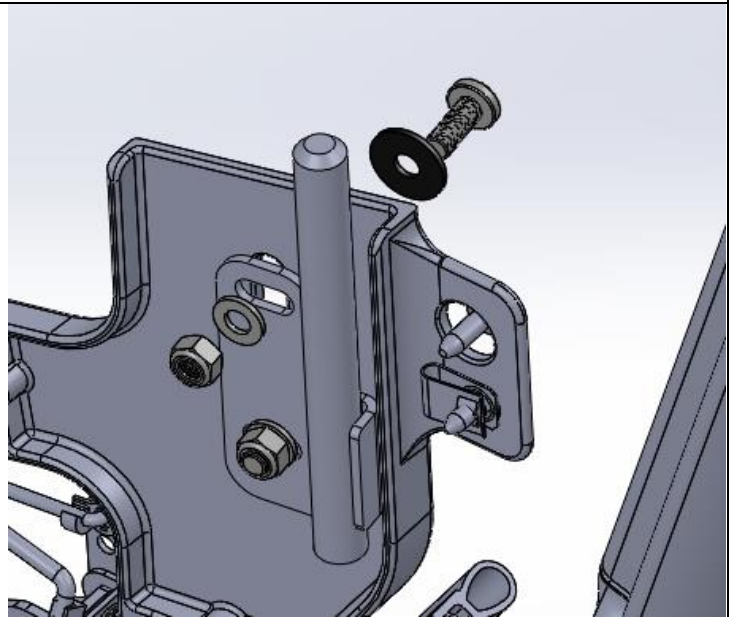
12) Mark front hinge positions:

Use a permanent marker to trace the initial position of the upper front vehicle hinge onto the aluminum casting.

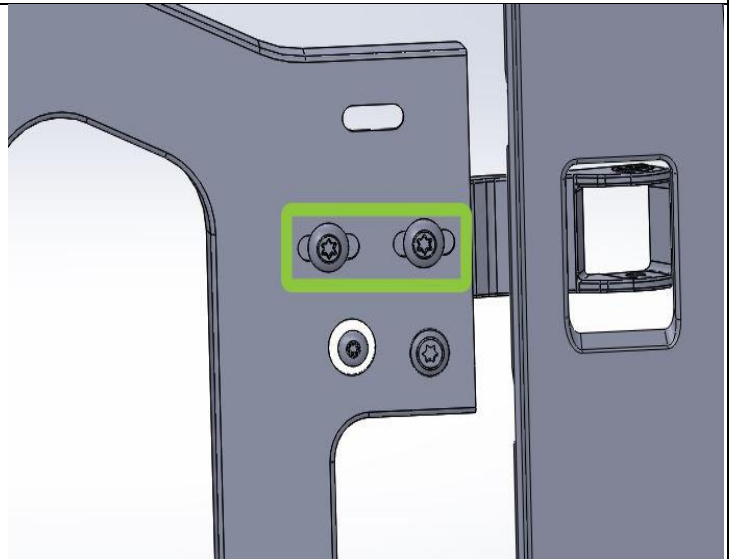


13) Rear receiving bracket installation:

Install the rear receiving bracket using the provided hardware. This bracket is installed on the OUTSIDE of the door casting. The M8 fender washer must go between the casting and the M8 bolt head while the M8 washer (16mm OD) must go between M8 hex nut and the bracket. Center the hardware in the slots. The hardware should be installed finger tight only at this step.



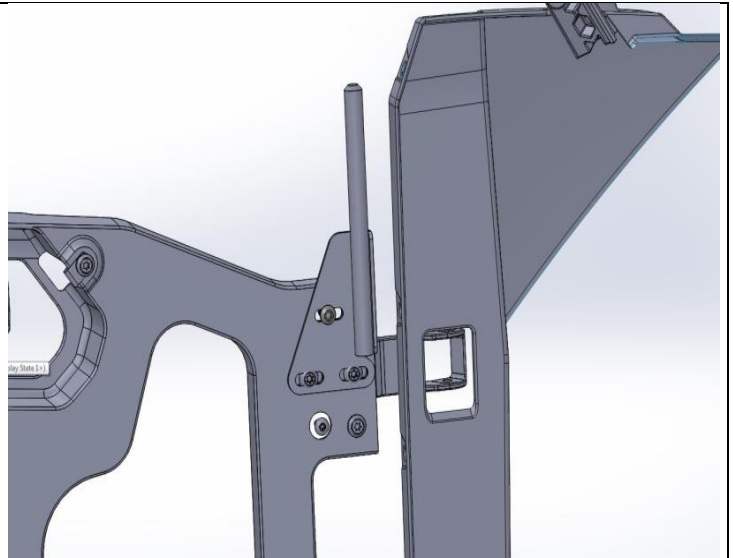
14) Remove the upper front vehicle hinge from the aluminum casting. Save the hardware for use in the next step.



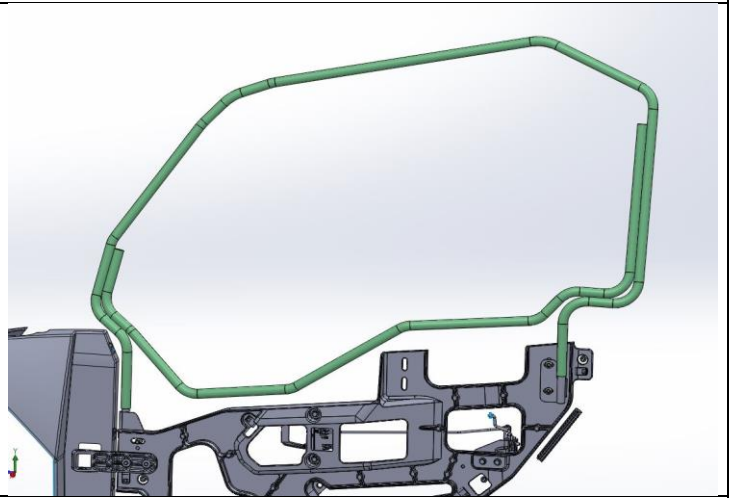


15) Front receiving bracket installation:

Install the front receiving bracket and reinstall the upper front vehicle hinge, using the provided hardware and reusing the hardware from the previous step. This bracket is installed on the INSIDE of the door casting. The M8 fender washer must go between the casting and the nut while the M8 washer (16mm OD) must go between bolt head and the bracket. The upper front hinge should be aligned with the position traced in step (4). Center the hardware in the slots if possible. The hardware should be installed finger tight only at this step.



16) Insert the upper door into the brackets.



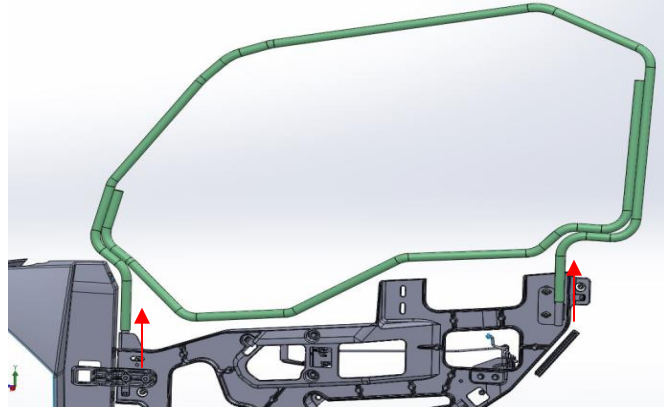
17) Alignment and adjustments:

Close the door and align the upper door to the vehicle OPS. Be sure the lower door swings, closes, and latches correctly. Adjust the receiving brackets to position the upper door correctly so that it seals fully against the ROPS. The upper door should slide smoothly on and off of the receiving brackets. Lubricate the receiving brackets as necessary.

18) Tighten the fasteners:

Tighten the receiving brackets. This may be done from the outside of the vehicle by opening the clear window and reaching through. Be sure the upper door is still aligned correctly.

19) Remove the upper door.



20) Place the exterior plastic panel onto the door frame in the correct location and mark the locations of the receiving brackets.

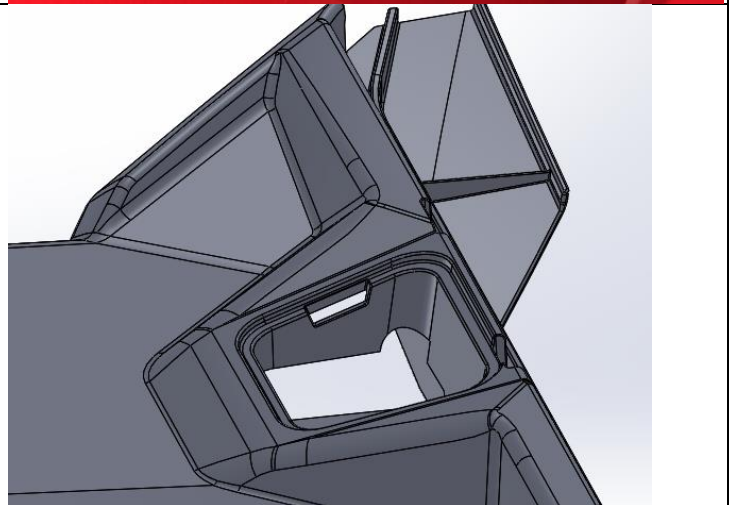


21) Trim the exterior plastic panels. Begin by drilling a small (approximately 0.125") hole in the marked locations. Visually confirm that the holes are centered above each receiving bracket pin. Gradually increase the drill size to a 0.875" diameter bit, while confirming the hole remains centered.

Note: Drilling the plastic requires care and caution to avoid damaging the doors. Use light drill pressure to avoid tearing or damaging the plastic outside of the intended hole area. A scrap wood block may be used under the plastic as additional support area being drilled for best results.



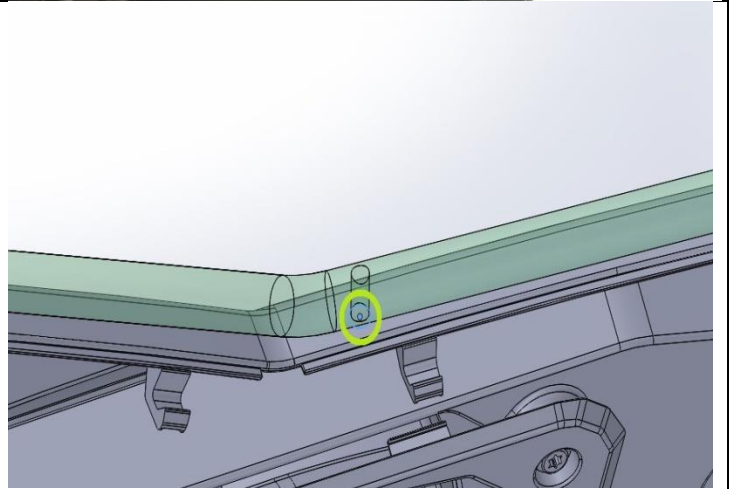
22) Reinstall all plastic panels and handles in the reverse order of removal. Be sure to reconnect all latch cables to ensure correct door operation. The upper door should be easy to install and remove through the holes cut in the previous step. Interior panels will need to be notched (Dremel and sanding bit) as shown to clear front receiving brackets.



23) On the left side only: Install the interior handle by removing the rear top bolts and placing spacers in the locations and bolting down the handles using the M6x35mm bolts with washers.

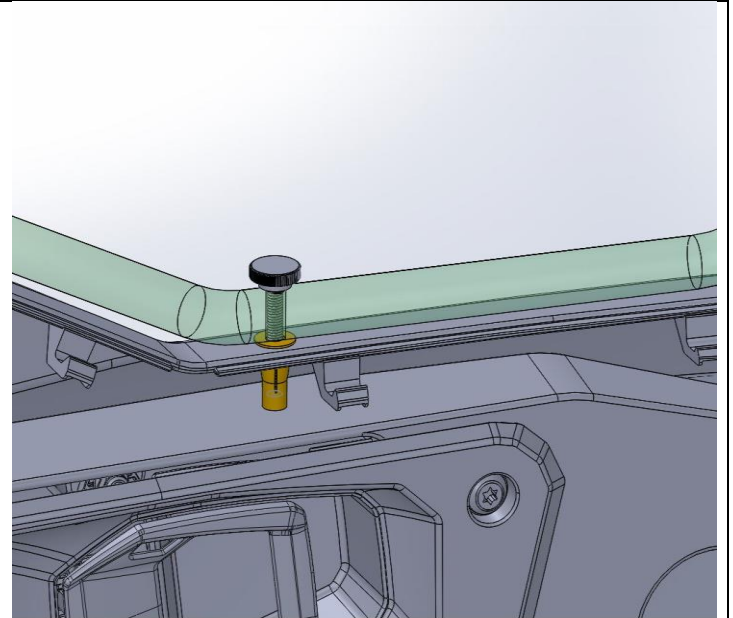


24) Reinstall the upper door and double check the fit. Close the door, and unzip the lower interior fabric (note: this is a separate zipper from the window zipper). Using an awl, mark the location for the jack nut and thumb screw through the frame and into the lower door plastic panel. Be sure to mark through the opening in the lower door and do not pierce the fabric.



25) Remove the upper door. Install the Jack nut in the marked location.

- Drill the mark on the lower door out to 9.5 mm.
- Press a jack-nut into the hole.
- Align the 8 mm serrated flange nut over the jack-nut with the flange down.
- Thread the 6 x 40 mm hex head bolt through the flange nut and into the jack-nut, until it is finger tight.
- Tighten the bolt. Use a wrench to keep the flange nut from spinning and ensure that the jack-nut is seated against the plastic. Tightening the bolt in this way will compress the jack-nut and secure it to the plastic lower door. **Do not over tighten.**
- Remove the bolt.



26) Reinstall the upper door. Install the thumb screw into the jack nut.



## STOP!!! IMPORTANT NOTICE PLEASE READ!!

Thank You for purchasing a QUALITY SPIKE product!

**Missing/Defective Parts**-In the rare event that any part is defective or missing and the box is NOT damaged, please contact Spike directly. We will send out replacements prepaid via US post office immediately from our warehouse in N.E. Ohio. (Expedited shipping is available at customer expense). The SPIKE Customer service line is (888) 769-2295, or e-mail us at [sales@spikepowersports.com](mailto:sales@spikepowersports.com)

**Incorrect Product Ordered** – You MUST contact the company that processed your order and charged your credit card IMMEDIATELY! SPIKE is NOT Responsible for items sent due to incorrect orders being placed-THIS MUST BE ADDRESSED BY THE SELLER. They will issue an RA number and Incorrect orders must be returned COMPLETE and in the original packaging, all windshields must have the protective film in place or a 20% restock fee may be imposed. Spike is not responsible to reimburse shipping fees either to or from the customer due to incorrect orders.

**For DAMAGED Shipments**- Shipping Damage needs to be reported IMMEDIATELY to the place of purchase so a claim can be filed. Please note that it may take up to 5 days for UPS/FED-EX to process a damage claim. You will be required to supply pictures of the damaged packaging and submit to the place of purchase. Prior to any returns, it is necessary to contact the place of purchase to make them aware of any issues and issue a Return Authorization (RA) number.

Sometimes damage can occur that may NOT be visible in the packaging, such as a heavy item being placed on a flat box. If there is damage, do NOT install the product-please contact the place of purchase immediately!

Thank you for purchasing SPIKE ACCESSORIES for your machine!

Spike Powersports

Canal Fulton, Ohio