



655 Elm Ridge Ave, Canal Fulton OH, 44614
Phone: 866-576-5115- SpikePowersports.com

Contents:

Qty	Description	Part Number
1	Lower door frame, left	n/a
1	Lower door frame, right	n/a
1	Upper door frame, left	n/a
1	Upper door frame, right	n/a
1	Fabric door covering, left	n/a
1	Fabric door covering, right	n/a
2	Door Limiter Straps	n/a
2	Heat Shrink Tubing	n/a
2	Inside door knob, plastic	P46-1044
2	6mm eye end with cable	P47-1315
2	6mm flanged bolt with hole	P47-1316
2	6mm fender washer	P47-1292
2	6mm lock nut	P47-1359
6	6mm flanged bolt	P47-1289
28	8mm flat washer	P47-1293
24	8mm x 20 Torx head screw	P47-1244
4	Plastic washer	P47-1335
12	8mm lock nut	P47-1353
2	Self-tapping screw	P47-1386
1	Grip adhesive	P49-1027
1	Vibratite adhesive	P49-1013
1	Rotary latch, left	P45-1075
1	Rotary latch, right	P45-1076
2	Foam grip	P49-1026
2	Upper door hinge	P45-1365
2	Lower door hinge	P45-1366
1	Upper vehicle hinge, left	P45-1367
1	Upper vehicle hinge, right	P45-1368
1	Lower vehicle hinge, left	P45-1369



1	Lower vehicle hinge, right	P45-1370	
2	Door striker	P45-1371	
2	Outside door handle	P46-1127	
1	Instruction sheet		

Tools Required:

- Safety glasses
- 10 mm wrench
- 13 mm wrench
- 10 mm socket and ratchet
- T40 Torx driver
- Philips head driver
- Awl
- Heat Gun
- Hand drill
- Soldering iron (a hand drill with 0.25" and 0.3125" bits may be used instead, see notes below)
- (2) approximately 12" zip ties
- (1) Approximately 6"W x 6"L piece of thin scrap wood

Approximate Assembly Time: 1 hour

Safety Information:

- You must wear eye protection and appropriate gloves when installing this kit.
- The engine must be OFF when performing any operation on the vehicle.
- Always be aware of parts that can move, such as wheels, transmission components, etc.
- Some components may be HOT. Always wait for the engine to cool down before performing work. To reduce the risk of severe injuries or death, read the safety labels and follow these rules.
- Door is not intended to retain and/or protect occupants.
- Subtract the weight of the accessory from the weight limit of the vehicle.

Always:

- Fasten your seat belt
- Fasten lateral net.
- Keep your entire body inside the cockpit.
- Latch the door before riding.
- Transport this vehicle facing forward.
- Remove nets when using full doors only if required due to installation of the full doors.
- Do not rest elbow on door while riding.
- If nets are removed, reinstall nets if doors are removed.
- Never operate UTV without either door or nets in place.
- Inspect for safety problems, loose hardware, and loose buckles and straps before use.

Use and Care Information:

- To clean, sponge with mild soap and cold water, rinse with a hose and allow it to drip-dry.

- Do not machine wash or dry.
- Use mild detergent to remove stubborn stains.
- When not in use, the window roll-up strap can be snapped to itself or otherwise stowed.
- The zipper should be cleaned using a toothbrush with soap and water and rinsed as needed. Once the zipper is cleaned, the teeth should be lubricated using beeswax or zipper specific lubricant.

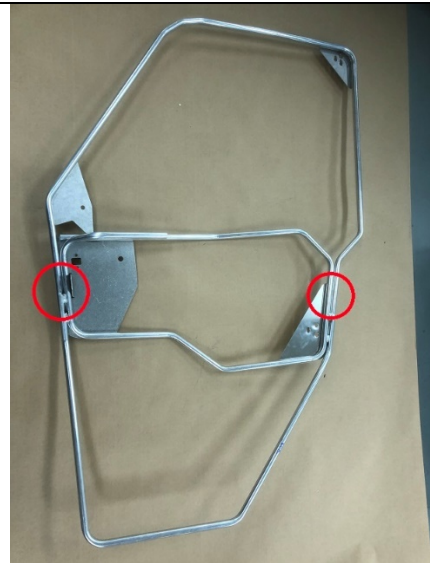
Important:

- This Spike Power Sports Door Set is exclusively designed for use with the Polaris Ranger XP vehicle.
- Before beginning, read the installation instructions carefully, completely and verify that all components are included in this kit.
- Installation is easiest if the vehicle is clean and free of debris.
- UTV vehicle preparation including cleaning and installing adhesive backed fasteners must be done indoors at room temperature. All adhesives must be given 24 hours to dry before operating.
- The instructions are written and the photos show installation to the left side of the vehicle. All steps must be performed on both sides of the vehicle.
- The illustrations/photos in this document show typical construction of the different assemblies and may not reproduce the full detail or exact shape of the parts; however, they represent parts that have the same or similar functions.
- Install all fasteners to the torque specified in the factory service manual.



Installation Instructions:

- 1) Assemble the upper section of each frame onto the lower section. Be sure to match the correct right-side and left-side parts. The upper and lower section of each frame will slide together until the ends touch.



- 2) Install the self-tapping screw through mirror mount plate into the lower frame tube and tighten to hold the frame sections together.



- 3) Lay the fabric door covering on a clean, flat surface with the inside of the door covering facing upwards. Unzip the inner zipper and the window zipper. Install the frame into lower portion of door covering.

NOTE – the two sides of the fabric door covering are held together with hook and loop fastener around the lower clear window and will need to be separated by hand in order to allow the frame to be completely installed.

Pull the fabric door covering onto lower portion of the door frame.



- 4) Stretch the fabric door covering around the upper rear corner of the door frame. Continue working the door covering over the door frame. The upper front corner of the door frame should be the last part of the frame to be covered.



- 5) Zip door covering zipper to be partially closed, stopping just before the door handle plate.

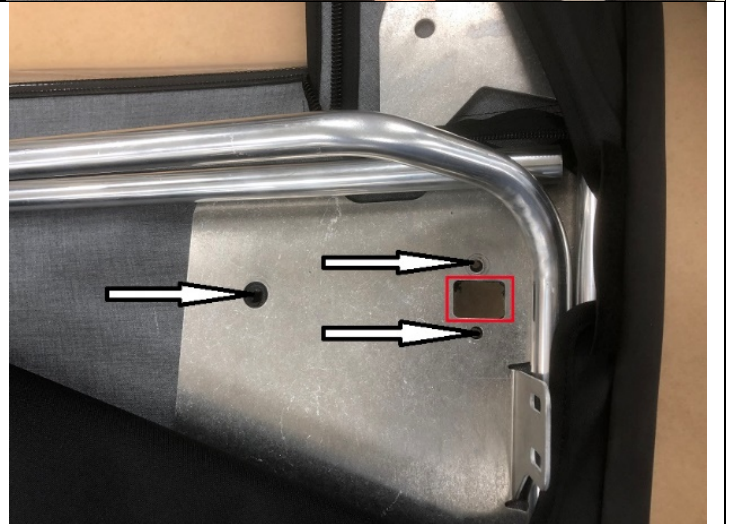
Check the fit of the door covering onto the frame. Be sure the fit is free of wrinkles and the door covering looks to be approximately centered on the frame.



- 6) From the inside of door, use a soldering iron to burn holes through the fabric door covering. Holes will be needed for the three door handle bolts and the four corners of the rectangular hole. Use a razor knife to finish cutting the rectangular hole and use a soldering iron to seal the edges of the fabric.

IMPORTANT – This step requires extra care in order to not damage the inner door fabric.

NOTE – A drill may be used instead of a soldering iron, but If using a drill, be sure to have the drill set counterclockwise in order not to tear the fabric. Seal the edges using a lighter after drilling and cutting.



- 7) Install the outside door handle using (3) 6mm bolts and (1) 6mm fender washer. Only the rear bolt will get a washer. Be sure that the handle sits flat against the plate and that the extended plastic boss seats into the rear hole of the plate.

Screw the 6mm eye end with cable fully into the door handle.



- 8) Install the rotary latch as shown using (2) 6mm bolts. Do not fully tighten at this time, so that the latch can still be moved for later adjustment.

NOTE - The correct latch must be installed to each door. The latch face with writing on it must be facing the plate. The face with the extended grommets should not be against the plate.



- 9) Remove the side net front buckle bracket that is secured with (2) T40 Torx screws.

NOTE: Retain the removed hardware for use with the door striker.



10) Install the door striker using (2) T40 Torx screws removed from the buckle bracket. Center the striker. Do not fully tighten the screws at this time. The striker bracket should be secure, but still be able to move up and down for adjustment later.



11) Remove the lower front net attachment and the plastic net retainer secured with (2) T40 Torx screws.

NOTE: Either reinstall or retain all removed hardware so that it may be used to reinstall the nets if the doors are removed.



12) Remove all of the side net brackets. The lower rear bracket and hip restraint bracket are secured with T40 Torx screws.

The net bracket located behind the seat is secured with an 8mm bolt and nut.

The upper rear net bracket is secured with an 8mm bolt and nut plate.

NOTE: retain the nut plate for use with the vehicle upper hinge installation.

Remove the vehicle side nets.

NOTE: Either reinstall or retain all removed hardware. Retain the vehicle side nets. Reinstall the nets using the original hardware if the doors are removed.





13) Install the upper vehicle hinge using (2) T40 Torx screws, (2) 8 mm flat washers and the nut plate removed in a previous step. Center the screws in the slots. Do not fully tighten the screws at this time. The hinge bracket should be secure, but still be able to move up and down for adjustment later.

Install (1) plastic washer onto the hinge pin.



14) Install the lower vehicle hinge using (2) T40 Torx screws and (6) 8mm flat washers. For each hole, (1) washer will go on the outside of the bracket and (2) will go between hinge and vehicle to act as spacers. These screws should be fully tightened.

Install (1) plastic washer onto the hinge pin.



15) Set the door into the vehicle frame and latch the rotary latch onto the door striker. Position the door so that it is centered in vehicle frame. Adjust and tighten the rotary latch and striker if needed to help hold the front of the door closed and correctly positioned. Temporarily secure top rear of the door using a zip tie.



16) Install the upper door hinge onto the upper pin on top of the plastic washer. Be sure the hinge is oriented correctly.



17) Press the upper door hinge against the door. Feel the fabric for the cutouts in the upper door frame plate. Make any adjustments necessary to both the door and the hinge for the best fit.

NOTE: The door frame plate is slotted vertically, and the hinge is slotted horizontally.

Use the awl to mark each of the hole positions.

IMPORTANT: Place a piece of scrap wood or other barrier between the frame plate and the inner door fabric before continuing.

Use a soldering iron to burn holes through the fabric door covering at each marked location.

IMPORTANT – This step requires extra care in order to not damage the inner door fabric .

NOTE – A drill may be used instead of a soldering iron, but If using a drill, be sure to have the drill set counterclockwise in order not to tear the fabric. Seal the edges using a lighter after drilling.



18) Install the upper hinge to the door using (3) T40 Torx screws with (3) 8mm flat washers (washer will be used on the exterior of the hinge) and (3) 8mm lock nuts. Fully tighten the hardware at this time.

19) Install the lower door hinge onto the lower pin on top of the plastic washer. Be sure the hinge is oriented correctly.



20) Repeat steps (17) and (18) for the lower hinge.

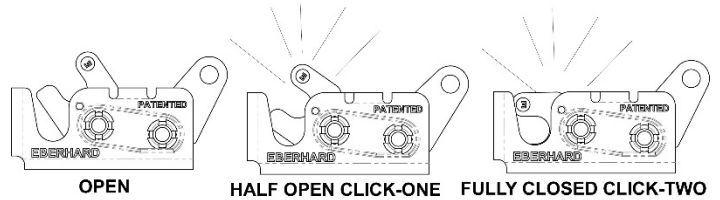
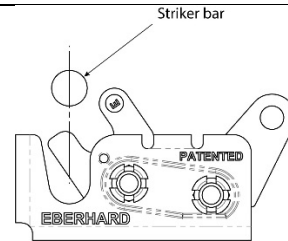
IMPORTANT: Place a piece of scrap wood or other barrier between the frame plate and the inner door fabric before continuing.

IMPORTANT – This step requires extra care in order to not damage the inner door fabric.

21) Remove the zip tie installed in step (15). The door should be fully supported by the rear hinges. Fully close the inner fabric zipper and the window zipper. (tuck excess zipper flap behind inner door skin)

Open and close the door by operating the latch from inside of the vehicle. Adjust the striker and rotary latch so that striker is centered in rotary latch when in the closed position. Be certain that the door seals tight to the vehicle frame with no air gaps when closed from both outside and inside of the vehicle.

NOTE - The rotary latch has two positions (2 clicks). Be certain that the latch fully closes after the final adjustments are made.



22) Put adhesive inside leading edge of the foam grip and slide it onto the door handle.



23) Slide shrink wrap tubing onto the cable portion of the 6mm eye end and cable installed in step (7). Install the cable to the latch.

Insert the bolt with cable through the rotary latch lever. Insert the cable through the 6mm flange bolt with hole. Adjust the cable so it has $\frac{1}{4}$ " of slack and install and tighten a 6mm locknut.

Insert the cable end through the shrink tube and heat shrink tube to hold the cable in place.

Install knob onto end of cable bolt.



24) Install the door limiter strap.

Unzip the inner door fabric zipper and loop the strap around the lower frame tube located near the hip restraint. Feed buckle end of the strap back through loop on the end of strap.

Feed the end of strap through opening in the inner door fabric. Wrap the strap around the hip bolster and back through the buckle.

Adjust the strap so that the door opens approximately 65 degrees.



25) If any final adjustments are needed, loosen the door hinges slightly and adjust them so that door sits properly within the vehicle frame and opens and closes properly from both the inside and the outside of the vehicle.

Fully tighten all hardware.



26) Note: Left and Right side door have provision for side mirrors. To use mirrors, burn a hole through fabric as shown in previous steps.



27) To stow window, fold as shown, tuck into door pocket and press inner door skin to outer door skin. Magnets will keep the door skins held together.



