



**INSTALLATION INSTRUCTIONS  
CANAM MAVERICK TRAIL  
REAR VENT WINDSHIELD  
PART # 77-2600-R**

**IMPORTANT NOTICES**

**READ AND UNDERSTAND THESE INSTRUCTIONS COMPLETELY BEFORE INSTALLATION TO AVOID INJURY TO YOURSELF, DAMAGE TO THE VEHICLE OR ACCESSORY.**

- For proper installation, **TWO** people are required.
- Torque specifications must be followed when tightening bolts. Over-tightening any and/or all screws will cause cracks around mounting holes which is not covered by any warranty.
  - As specified on carton label, once protective film on shields is removed, product cannot be returned.
- As specified on carton label, damage caused by packaging staples is not covered by warranty. All staples must be removed prior to removing product from carton.
- Failure to follow these installation instructions completely may void any warrantable components and result in product damage or personal injury.
- Do not use Loctite or any other similar fastener adhesive. These types of products react to plastics and cause cracking. Not covered by any warranty.
- Our windshields are made from the highest quality material providing optimum transparency and clarity. Blurriness and/or extrusion marks may or may not appear when looking through windshield from a wide, side-angle. This is normal for all extruded clear plastic materials.
- The application of improper cleaners, abrasive and/or dirty cleaning towels can severely damage the product. Failure to follow cleaning recommendation (provided herewith) may void any warrantable components.

**DEALER**

**These instructions contain important information for future reference and must be given to the customer at time of purchase or upon completion of installation.**

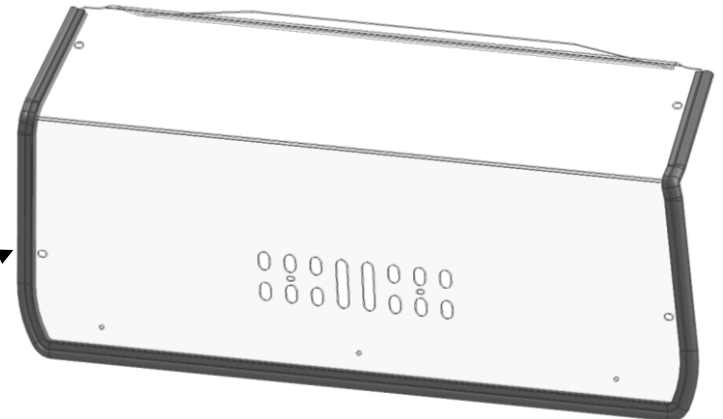
**Parts List** (parts available with kit only and not available separately)

ITEM	PART NAME	DESCRIPTION	QTY
A	Windshield	CNC windshield cut-out made of 1/8" thick GE polycarbonate or equivalent	1
B	Vent grill	CNC vent grill cut-out made of 3/16" tinted polycarbonate	1
C	Co-extruded bulb seal	Includes: 84" Co-extruded bulb seal <b>[end user to cut to exact length]</b>	1
INSTRUCTION BAG	D	Windshield Hardware Includes: 4 metal plate hooks, 4 phillips truss head screws M6 x 20, 4 plastic shoulder washers M6 and 3 push type plastic retainers	1
	E	Vent hardware Includes: 2 carriage bolts M6 x 30, 2 thin plastic washers, 4 plastic washers M6, 2 rubber washers M6 and 2 female thread knobs M6	1

**1. Installation**

- a) Find a clean flat area where you can safely lay down the windshield (Item A). Partially remove the protective film on both sides and apply the co-extruded bulb seal (Item C) using manual pressure to ensure good adhesion and cut any excess.

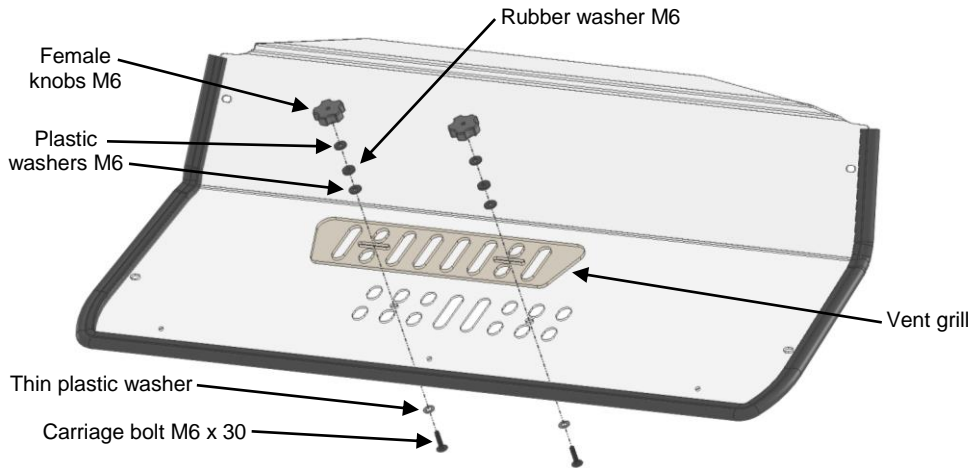
Co-extruded bulb seal 1/4" (+/- 83")



## IMPORTANT NOTICES

**Over-tightening any and/or all screws will cause cracks around mounting holes which is not covered by any warranty.**

- b) As per drawing, install the vent grill (Item B) on the interior side of the windshield using supplied hardware (Item E).

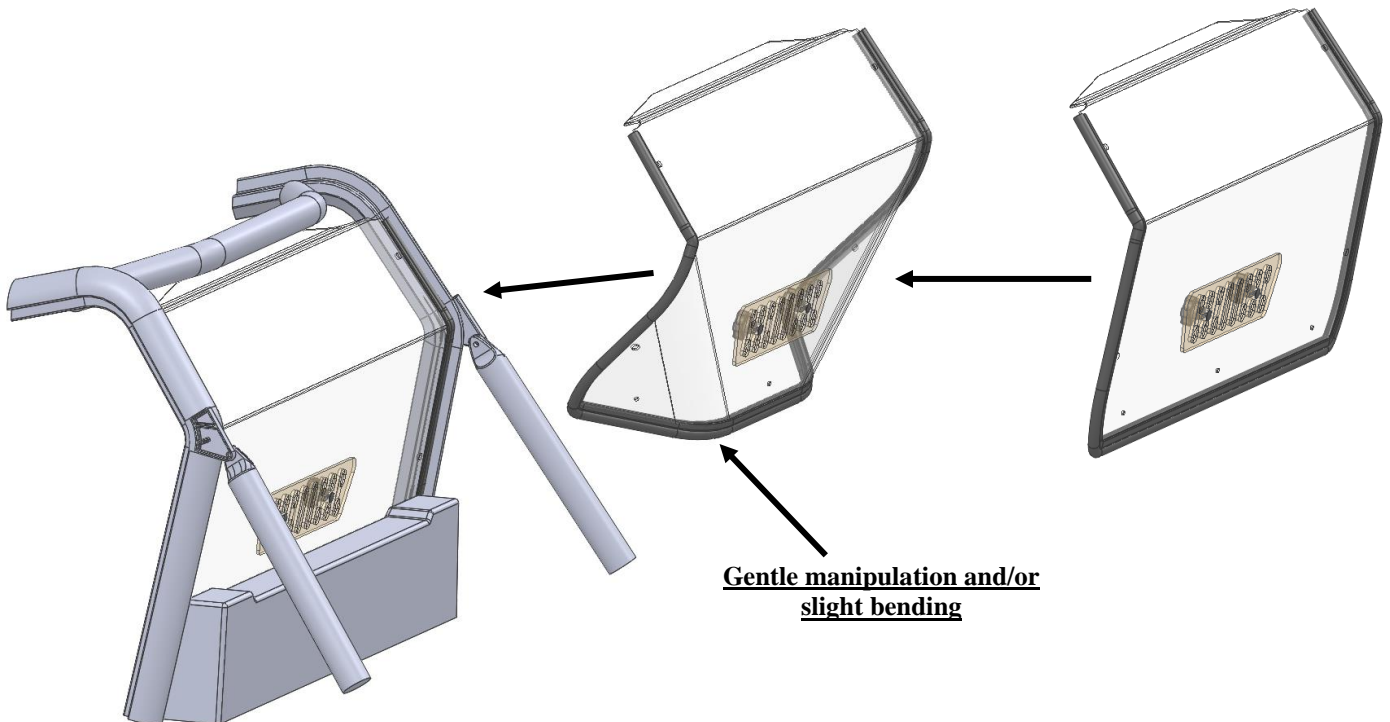


- a) Install the windshield to the vehicle as shown below.

## IMPORTANT NOTICES

**TWO people are required to install the windshield to the roll cage. Since windshield is wider at the bottom, gentle manipulation and/or slight bending by each person will be required for windshield to slide all the way down into position.**

**Warning: Exercise extreme care during the next step in order to ensure that you do not damage the windshield or vehicle. This is a tight fit.**

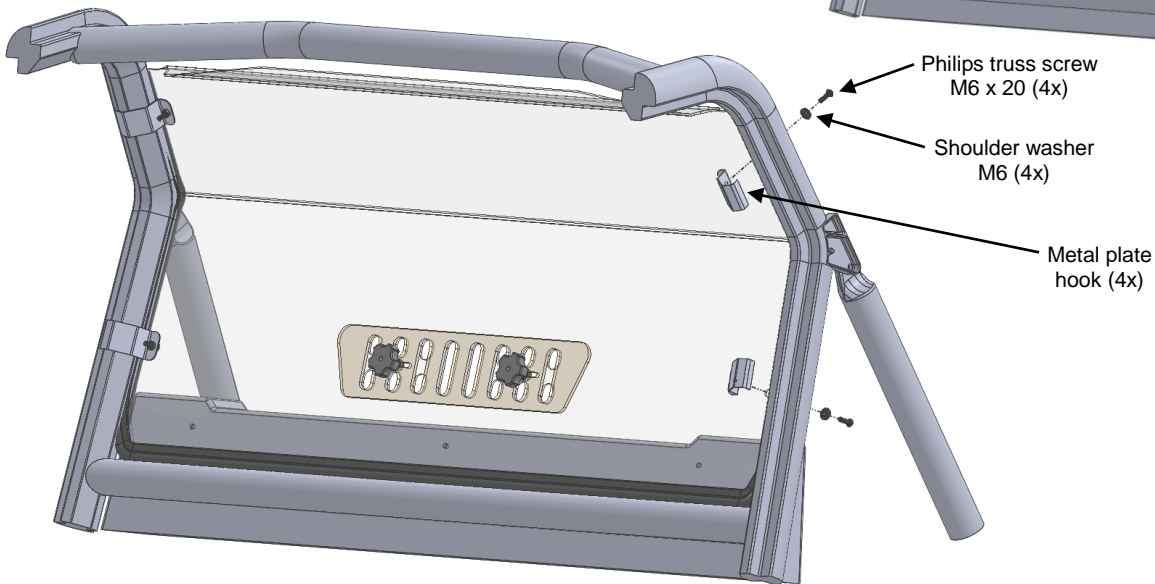
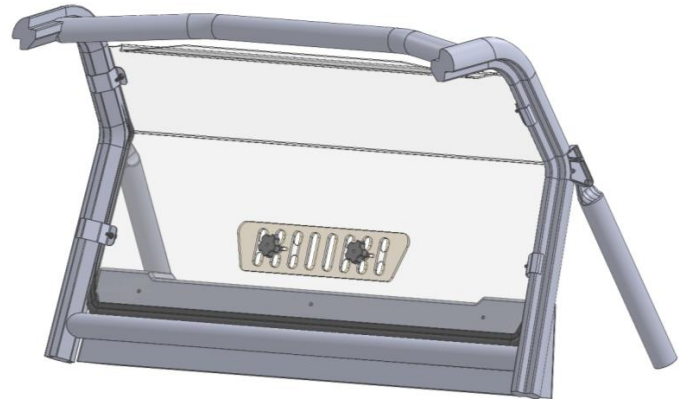


# IMPORTANT NOTICES

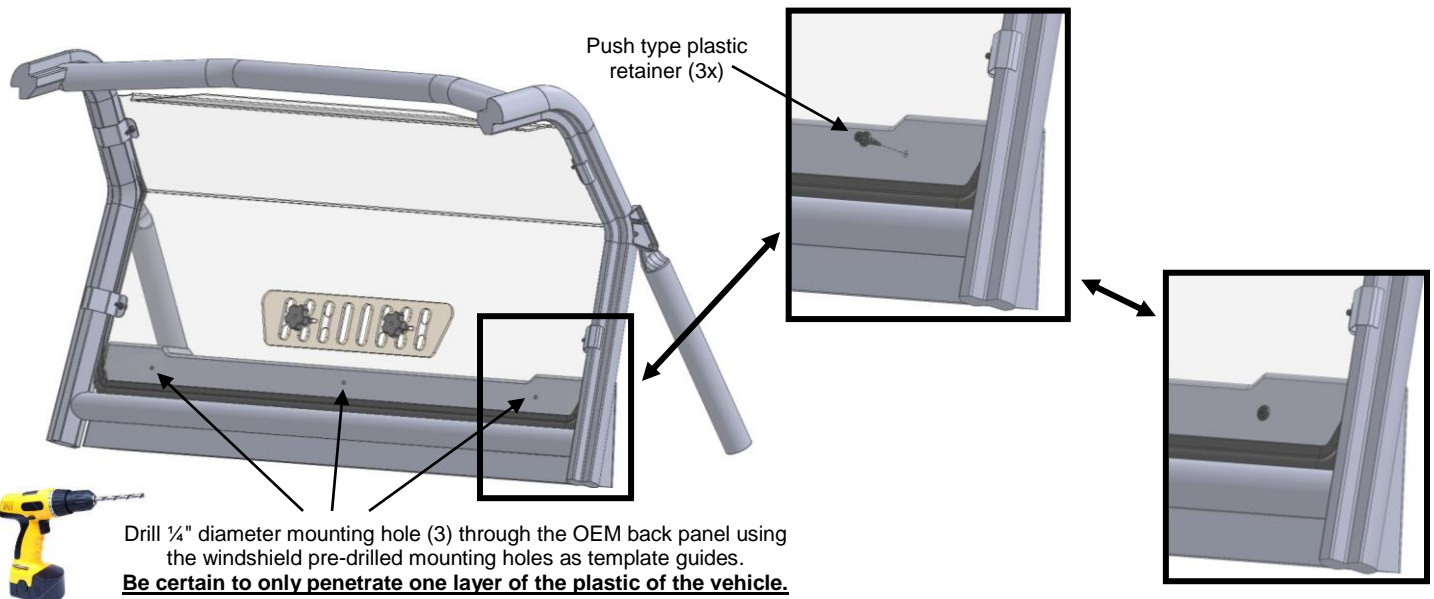
**Over-tightening any and/or all screws will cause cracks around mounting holes which is not covered by any warranty.**

- b) Install the supplied hardware (Item D) as shown below. Adjust the position of the windshield and tighten.

**Caution: over tightening any hardware could cause irreversible damage to the windshield.**



- c) Ensure that the windshield is properly positioned and drill  $\frac{1}{4}$ " diameter mounting hole (3) through the OEM back panel using the windshield pre-drilled mounting holes as template guides. **For each hole, a single (1) layer of OEM back panel should be drilled / pierced.** Secure in place using supplied push type plastic retainers as shown below.



# IMPORTANT NOTICES

**Trailerable ONLY with a FULL Front windshield AND Roof - or damage can occur!**

## 2. Maintenance and Care

Tighten all hardware after first use and periodically thereafter.

### CLEANING:

- Rinse with lukewarm water; wash gently with mild soap or detergent and lukewarm water, using a soft cloth or sponge. **DO NOT SCRUB** or use brushes or squeegees.
  - Rinse again. Dry with soft cloth or moist cellulose sponge to prevent water spotting.
- To remove wet paint, glazing compound or grease, rub lightly with a good grade of VM&P naphtha or isopropyl alcohol, then wash and rinse. **DO NOT USE GASOLINE.**

**NOTICE:** Abusive cleaning procedures by hand washing or automated washing equipment will eventually result in visual hazing, loss of light transmission and coating delamination.

#### Compatible Cleaning Agents

- Aqueous Solution of Soaps and Detergents

----- Joy ----- | Freon T.F. ----- | Palmolive liquid ----- | Top Job ----- | VM&P grade Naphtha ----- | Windex (with ammonia D) -----

### MINIMIZING HAIRLINE SCRATCHES

For minimizing scratches and minor abrasions, mild automobile polish can be used.

**Recommended products:** Johnson Paste Wax, Novus Plastic Polish #1 and #2, Mirror Glaze plastic polish and Plexux1.

Testing polish on a separate Lexan sample is recommended. Be sure to follow product instructions carefully.